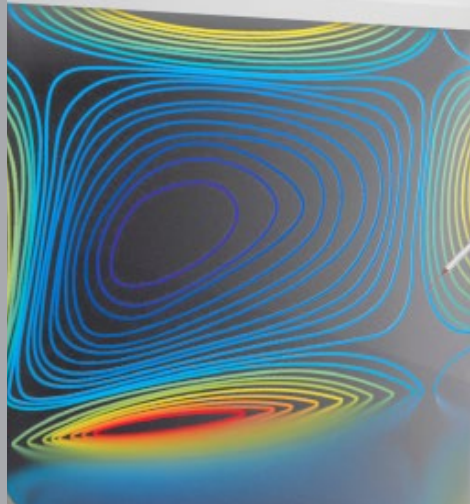


ValCaT

Validation • **Calibration** • **Transportation**

*Mobile system
for calibration
and evaluation of
wind tunnels*



Validation

- Direct determination of flow properties
- Flow measurement via the whole test track
- Validation of CFD simulations

Calibration

- Calibration of aerodynamic and climatic wind tunnels
- Data analysis and graphical processing

Transportation

- Easy integration into the test section
- Fast assembly and disassembly, as well as readiness
- Maximum mobility – worldwide

General Information

aem ValCaT is a mobile robotic arm to validate and calibrate aerodynamic and climatic wind tunnels and for the direct determination of local flow properties.

- Use in climate and wind tunnels at speeds up to 186 mph
- Auf- und Abbau sowie Integration in die Messstrecke vor Ort durch aem-Mitarbeiter
- Fully automatic processing of a freely definable envelope
- Highest position accuracy of the measuring probes
- Acquisition of measurement data regarding:
 - Pressure
 - Speed
 - Temperature
 - Grade of turbulence
 - Humidity
- Date acquisition, processing and evaluation by aem-employees
- Analysed results (including raw data) are passed on via project reports

